

NORTHEASTERN YORK SCHOOL DISTRICT



Info Sheet

ALL THE TIME
ALL KIDS
ALL OPTIONS

Average Teacher Salary 2023-24

Northern York County SD State Average

\$61,805 \$70,936

Salary Trend



Spending per Student 2023-24

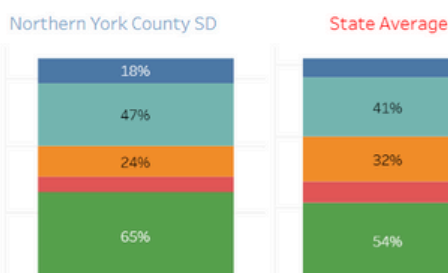
Northern York County SD State Average

\$16,312 \$18,353

Spending per Student Trend

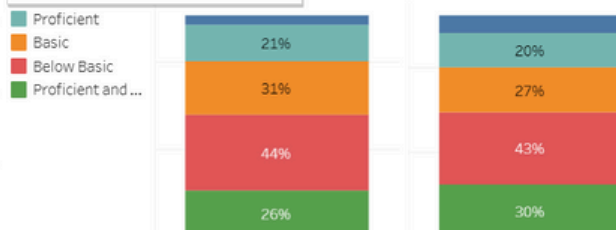


8th Grade English Performance



8th Grade Math Performance

School Year: 2022-23
Avg. Average Annual Salary: \$61,562



Tax on \$300,000 Home (median value in PA)

Northern York County SD State Average

\$6,000 \$5,616

Funding Sources Percentages

Northern York County SD		State Average	
Federal Revenue	1.5%	State Revenue	24%
Local Other	2.3%	Federal Revenue	4%
Local Taxes	37.3%	Other Revenue	36%
Other Revenue	39.6%	Local Other	3%
State Revenue	19.3%	Local Taxes	33%

Source: <https://public.tableau.com/shared/J2FRHNBFD>

District Details (2023-2024 school year; Fiscal data from 2021-2022)

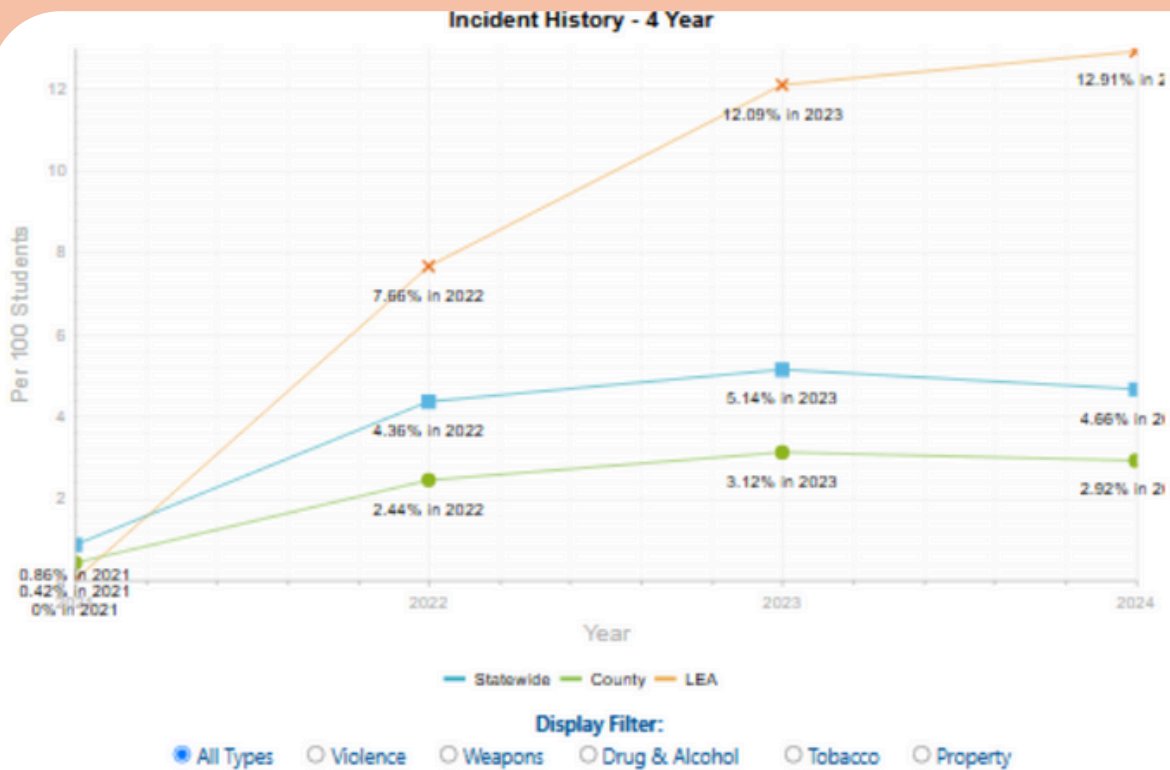
Fiscal

	Amount	Amount per Student	Percent
Total Revenue:	\$83,091,000	\$21,593	
Revenue by Source			
Federal:	\$5,625,000	\$1,462	7%
Local:	\$51,106,000	\$13,281	62%
State:	\$26,360,000	\$6,850	32%
Total Expenditures:	\$96,819,000	\$25,161	
Total Current Expenditures:	\$60,905,000	\$15,828	
Instructional Expenditures:	\$39,569,000	\$10,283	65%
Student and Staff Support:	\$6,311,000	\$1,640	10%
Administration:	\$5,603,000	\$1,456	9%
Operations, Food Service, other:	\$9,422,000	\$2,449	15%
Total Capital Outlay:	\$23,042,000	\$5,988	
Construction:	\$20,921,000	\$5,437	
Total Non El-Sec Education & Other:	\$246,000	\$64	
Interest on Debt:	\$2,604,000	\$677	

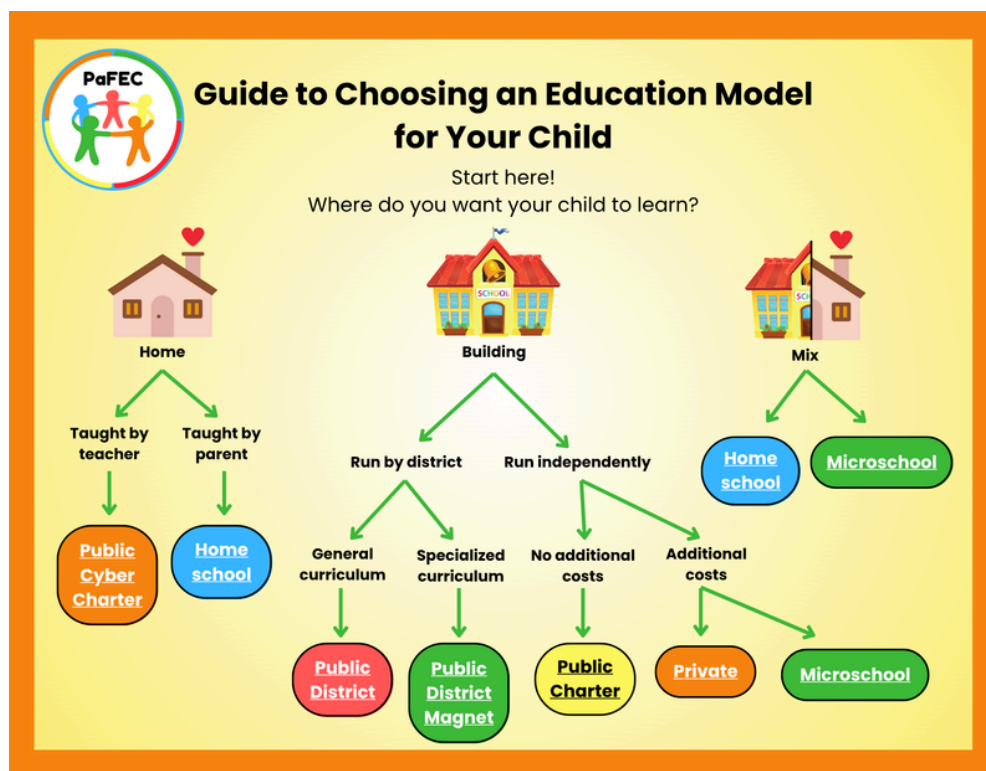
Note: Details do not add to totals due to rounding.

Note: Fiscal data (including per pupil count used in this table) from 2021-2022.

Source: https://nces.ed.gov/ccd/districtsearch/district_detail.asp?Search=1&State=42&DistrictPageNum=33&ID2=4217520



Source: <https://www.safeschools.pa.gov/HistoricV2/School.aspx>



July 2025

350 Towne Square Way #97796
Pittsburgh, PA 15227
sharon.sedlar@paedchoice.org
www.paedchoice.org


paedchoice.org

 
@paedchoice

 
@pafamiliesforedchoice

NORTHEASTERN YORK SCHOOL DISTRICT

Information Sheet

PRIVATE SCHOOLS

Harrisburg Christian School

2000 Blue Mountain Pkwy, Harrisburg, PA 17112

Lighthouse Christian Academy

1347 Vernon St, Harrisburg, PA 17104

New Story School

2700 Commerce Dr, Harrisburg, PA 17110

Covenant Christian Academy

1982 Locust Ln, Harrisburg, PA 17109

Harrisburg Adventist School

424 N Progress Ave, Harrisburg, PA 17109

Harrisburg Catholic Elementary School

212 State St, Harrisburg, PA 17101

Rabbi David L Silver Yeshiva Academy

3301 N Front St, Harrisburg, PA 17110

St Catherine Laboure School

4020 Derry St, Harrisburg, PA 17111

St Margaret Mary School

2826 Herr St, Harrisburg, PA 17103

St Stephen's Episcopal School

215 N Front St, Harrisburg, PA 17101

Bishop McDevitt High School

1 Crusader Way, Harrisburg, PA 17111

Merakey Education & Autism Center

840 Sir Thomas Ct, Harrisburg, PA 17109

New City School DbA Logos Harrisburg

251 Verbeke St, Harrisburg, PA 17102

The Nativity School Of Harrisburg

2101 N 5th St, Harrisburg, PA 17110

Yellow Breeches Educational Center

1524 Pine Tree Ave, Harrisburg, PA 17112

The Rock City Learning Center

1501 Market Street, Harrisburg, PA, 17103

Harrisburg Academy (Wormleysburg)

10 Erford Road, Wormleysburg, PA 17043

The Londonderry School

1800 Bamberger Road, Harrisburg, PA 17110

The Circle School

727 Wilhelm Rd, Harrisburg, PA 17111

CHARTER SCHOOLS

Crispus Attucks

605 S Duke St, York, PA 17401

Lincoln

459 and 559 W. King St, York, PA, 17401

York Academy Regional

Lower School: 32 W. North Street, York, PA 17401

Upper School: 2 Hamilton Avenue, York, PA 17401

Capital Area School for The Arts

150 Strawberry Square, Harrisburg, PA 17101

Infinity

405 Locust Lane, Harrisburg 17109

Pennsylvania Steam Academy

1500 North Third Street, Harrisburg, PA 17102

Sylvan Heights Science

915 South 13th Street, Harrisburg, PA 17104